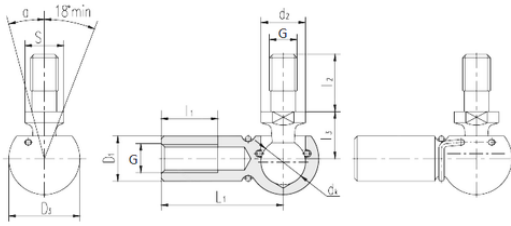




Air Suspension Bearing Co., Ltd



LS SQGL8 plain bearings

Bearing No. SQGL8

d2	14 mm
dk	13 mm
l1 min.	14 mm
l2 max.	16,5 mm
l3 min.	13 mm
D1	13 mm
D3	19,3 mm
L1	30 mm
S	11 mm
Thread (G)	M8
Angle	15 °
Weight	0,053 Kg

SQGL8 Bearing 2D drawings and 3D CAD models