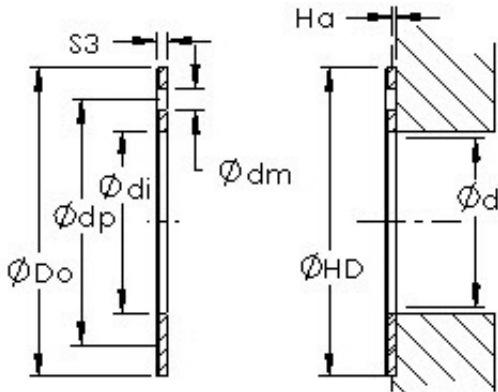




Air Suspension Bearing Co., Ltd



AST50 WC09IB Bearing 2D drawings and 3D CAD models

AST AST50 WC09IB plain bearings

Bearing No. AST50 WC09IB

Bore Diameter	14,2748 mm
Bearing Type	thrust washer
Shaft Dia., Nominal (d)	0.5620
Bearing Outside Dia., Nominal (D)	1.1870
Washer Inside Diameter, Nominal (di)	1
Washer Inside Diameter Tolerance (di tol.) - +.010 / -0	+0.010 / 0
Washer Outside Diameter, Nominal (Do)	1
Washer Outside Diameter Tolerance (Do tol.) - +0 / -.010	+0 / .010
Washer Thickness, Nominal (S3)	0
Washer Thickness Tolerance (S3 tol.) - +.001 / -.001	+0.001 / .001
Mounting Hole Dia. (dm)	0.099
Mounting Hole Pitch Dia. (dp)	0.942
Housing Counterbore Depth (Ha)	0.04
Housing Counterbore Depth Tolerance (Ha tol.) - +.010 / -.010	+0.010 / .010
Housing Counterbore Diameter, Nominal (HD)	1.187
Housing Counterbore	+0.010 / 0



Air Suspension Bearing Co., Ltd

Diameter Tolerance (HD tol.) - $+.010 / -0$	
Material	Carbon steel shell with PTFE / Fiber lining