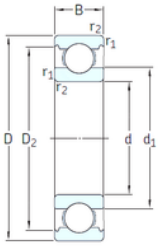




Air Suspension Bearing Co., Ltd



VA201



2Z/VA201



2Z/VA208



2Z/VA228

60 mm x 110 mm x 22 mm SKF 6212/VA201 deep groove ball bearings

Bearing No. 6212/VA201

6212/VA201 Bearing 2D drawings and 3D CAD models

Size	60x110x22 mm
Bore Diameter	60 mm
Outer Diameter	110 mm
Width	22 mm
d	60 mm
D	110 mm
B	22 mm
C	22 mm
d1	75,5 mm
r1 min.	1,5 mm
r2 min.	1,5 mm
D2	98 mm
Weight	0,78 Kg
Temperature -	30 to +250 °
Basic static load rating (C0)	36 kN
Category	Single Row Ball Bearings
Inventory	0.0
Manufacturer Name	SKF
Minimum Buy Quantity	N/A
Weight / Kilogram	0.797
EAN	7316577732002
Product Group	B00308
Enclosure	Open
Precision Class	ABEC 1 ISO P0
Maximum Capacity / Filling Slot	No



Air Suspension Bearing Co., Ltd

Rolling Element	Ball Bearing
Snap Ring	No
Internal Special Features	Polyalkylene Glycol/Graphite Mixture Filled
Cage Material	Steel
Internal Clearance	C0-Medium
Inch - Metric	Metric
Long Description	60MM Bore; 110MM Outside Diameter; 22MM Outer Race Width; Open; Ball Bearing; ABEC 1 ISO P0; No Filling Slot; No Snap Ring; Polyalkylene Glycol/Graphite Mixture Filled Internal Special Features; C0-
Other Features	Deep Groove Extreme Temperature Variant
Category	Single Row Ball Bearing
UNSPSC	31171504
Harmonized Tariff Code	8482.10.50.68
Noun	Bearing
Keyword String	Ball
Manufacturer URL	http://www.skf.com
Manufacturer Item Number	6212/VA201
Weight / LBS	0.78
Inner Race Width	0 Inch 0 Millimeter
Outer Race Width	0.866 Inch 22 Millimeter
Outside Diameter	4.331 Inch 110 Millimeter
Bore	2.362 Inch 60 Millimeter
bore diameter:	60 mm
static load capacity:	36 kN
outside diameter:	110 mm
precision rating:	Not Rated
overall width:	22 mm



Air Suspension Bearing Co., Ltd

finish/coating:	Uncoated
bore type:	Round
cage material:	Steel
closure type:	Open
outer ring width:	22 mm
row type & fill slot:	Single Row Non-Fill Slot
fillet radius:	1.5 mm
snap ring included:	Without Snap Ring
maximum rpm:	100 RPM
internal clearance:	C0
series:	62
operating temperature range:	-20 to +480 ° F
resistance features:	Corrosion Resistant, Extreme Temperature
d_1	75.5 mm
D_2	98 mm
$r_{1,2}$ min.	1.5 mm
d_a min.	69 mm
D_a max.	101 mm
r_a max.	1.5 mm
Basic dynamic load rating C	55.3 kN
Basic static load rating C_0	36 kN
Limiting speed	100 r/min
Limiting temperature T max.	250 ° C
Mass bearing	0.78 kg